



# B35 EB BLUELIFT

## The BLUELIFT Series

The BlueLift B35EB is the only lift in the world that can shrink down to a mere 7 ft 8 in long and 2 ft 6 in wide to fit into a standard elevator, not to mention the only lift that safely will allow you to work below level over guard-and handrails. A revolutionary elevator system on the job provides below level access to otherwise impossible to reach areas.

Powered by a strong lithium battery system the B35EB works with no odor or emission, providing noise free and efficient operation. Specifically designed to tackle maintenance needs in shopping malls, the B35EB is equivalently at home in office buildings, airports, hotels & resorts and museums to name a few applications.

It's reach ratio from negative 6 ft 6 in to positive 35 ft vertical height combined with its remarkable compact and lightweight format makes it the only lift in the world that can gain access to multi-story buildings by use of a standard people elevator.

In short, it is the one-of-a-kind tool that will offer safe reach solutions to maintain the outside of guardrails, handrails, walls to open spaces and areas over and/or adjacent to escalators and stairs.

The BlueLift Series are available in 7 models from 35 ft to 101ft:

- Lithium battery and combustion engine - check model availability
- Pass through a single or double door opening
- Set up on uneven surfaces

### Model

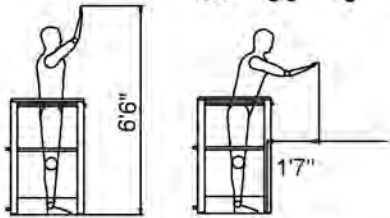
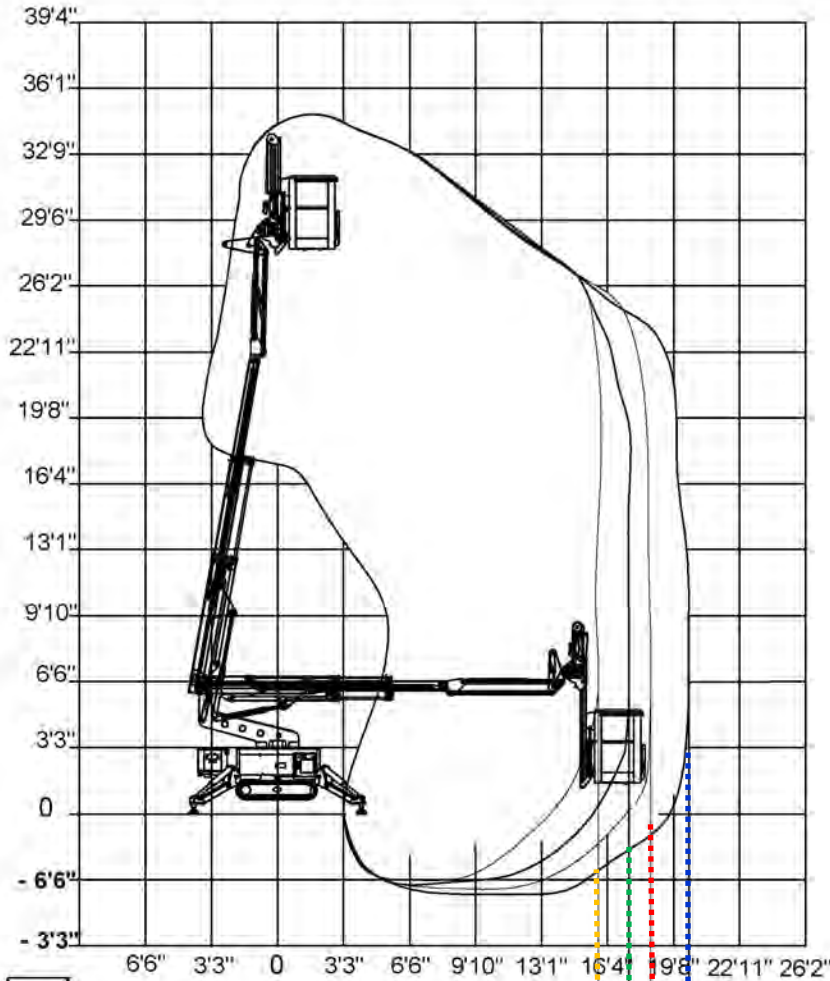
### B35EB

Working height	34ft 8in
Max outreach	20ft4in/264 lb
Basket load-max	440lbs
Basket dims	4ft3in x 2ft3in
Basket rotation	+/-90°
Turret rotation	340°
Height	6ft5in
Length (w/o basket)	10ft2in
Length (w/ basket)	12ft5in
Length (w/basket & jib detached)	7ft 8in
Width (w/o basket)	2ft10in
Footprint	8ft11in X 7ft10in
Weight (approx)	3384 lbs
Weight (w/basket & jib detached)	2854 lbs
Max pressure, tracks	5.52 psi
Track size(per track)	44in x 6 1/2 in
Max pressure foot pad	11.1 psi
Foot Pad area	15-3/4in X 15-3/4in
Lithium Battery	Standard
Hetronic Remote	Standard
We reserve the right to alterations	

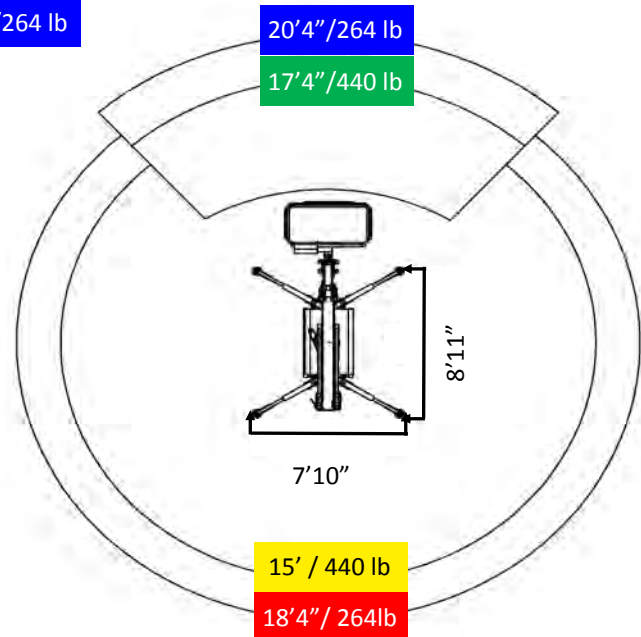
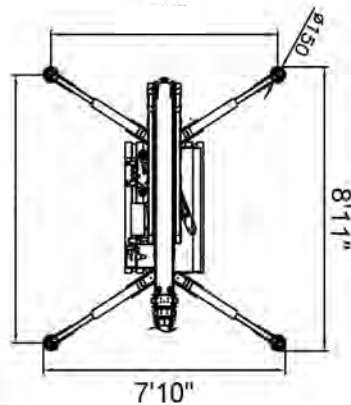
# B35 EB

## Standard Features:

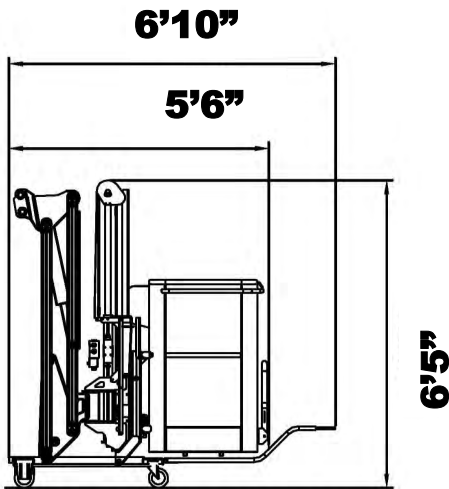
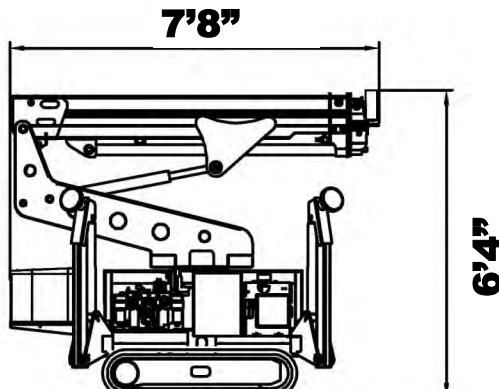
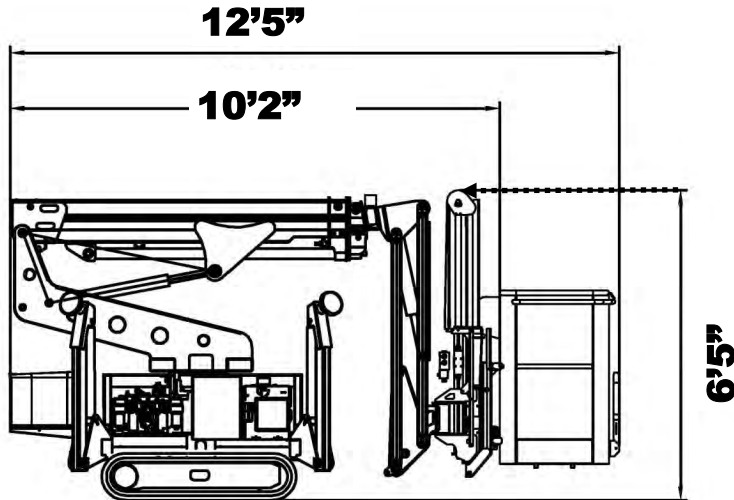
- Lithium Batteries
- 3-Section telescopic boom with working angle:  $-17^\circ / +80^\circ$  plus removable jib w/working angle  $110^\circ$
- Basket Elevation system
- $110^\circ$  Removable Jib
- Hetric remote
- Adjusting tracks
- Non marking tracks
- Trolley for jib
- Quick detachable basket
- Hydraulic leveling platform



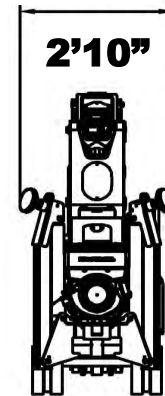
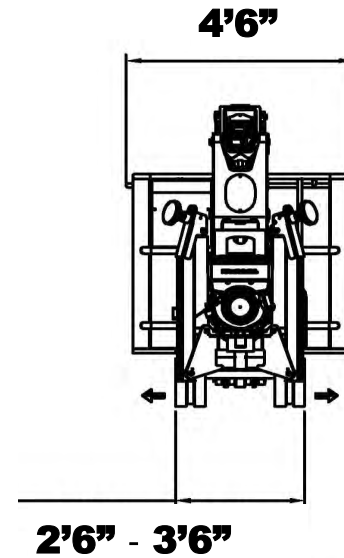
**WORKING PARAMETERS**



# B35 EB



Trolley with Basket



**Ruthmann Reachmaster N.A. LP**  
Toll Free: 866-358-7088  
[www.ruthmannreachmaster.com](http://www.ruthmannreachmaster.com)